



Leaving Lockdown Public Debate

Exploring issues of privacy, trust, community, and human rights.

‘What we learned’ workshop
Tuesday 23rd June 12.30pm – 2pm

Who we are



Independent research and engagement consultancy

Delivering the deliberation



Independent research organisation focusing on data and AI

Working on the content and providing subject expertise

Independent public participation organisation

Providing challenge and feedback on the process



Online engagement services

Providers of online engagement platform – Engagement HQ



Who's here

Chair – Diane, independent consultant and associate for Involve

Lockdown Debate participant – Carolyn

Traverse – Anna, Lucy, Duncan

Ada Lovelace Institute – Reema

Bang The Table – Jonathan

And you!

Mixture of attendees from central and local government, utilities, health – with an interest in public engagement.

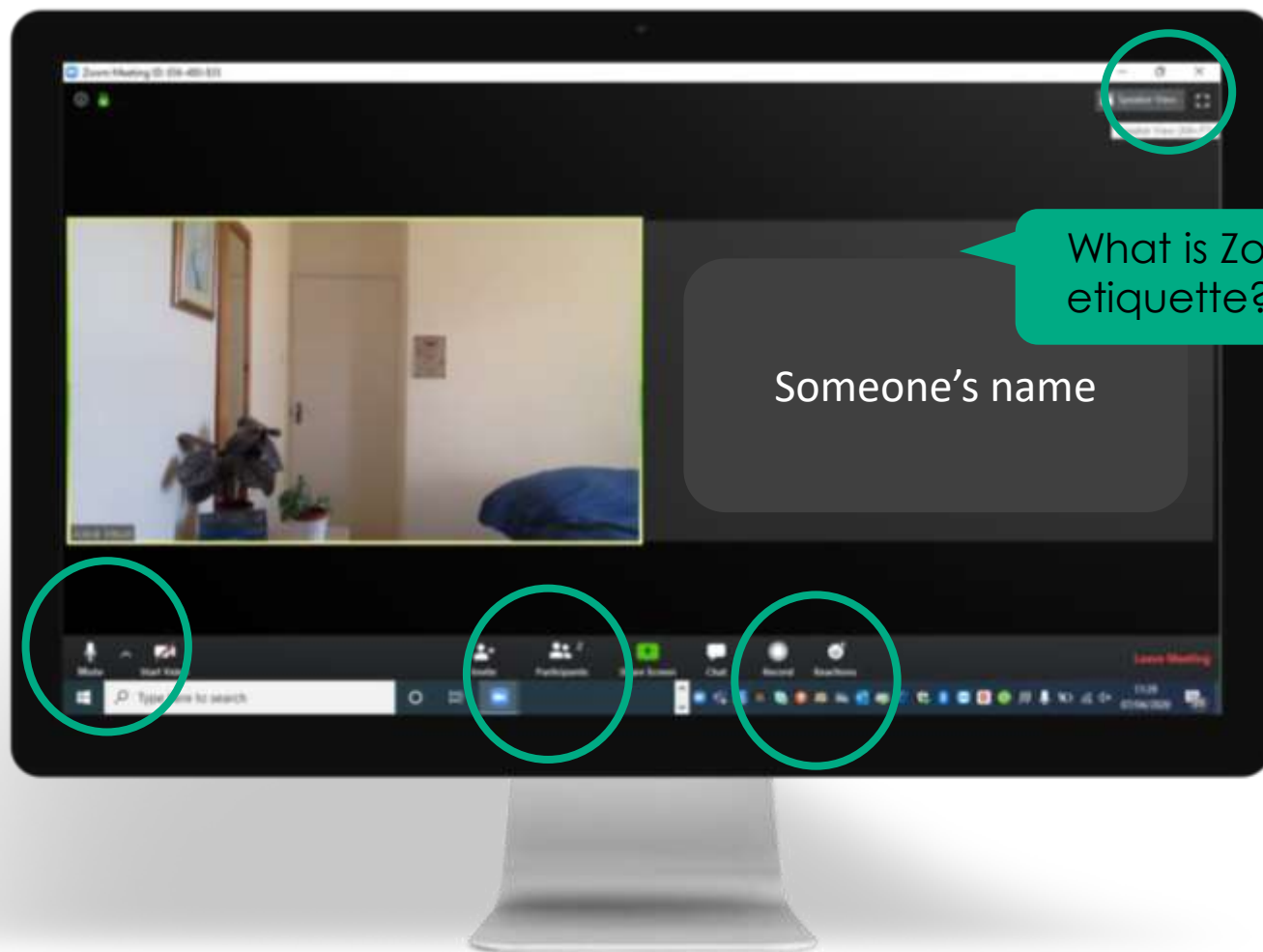


Agenda

Time	Activity
12.30pm	Welcome and introduction
12.40pm	Presentations: <ul style="list-style-type: none">• Anna – talking about the overall methodology and process• Jonathan – talking about the online platform• Carolyn – talking about her experience as a participant
1pm (ish)	Q&A
1.15pm	Break out rooms to discuss: <ul style="list-style-type: none">• Running engagement on a “live” social issue, and feeding into immediate policy cycles and needs
1.45pm	Plenary feedback
2pm	Close

Using zoom

What are breakout rooms?



- Don't worry about children, pets, or backgrounds!
- Tell us if there's a problem
- Use the chat function for quick comments
- Keep muted when not speaking
- Raise hands
- Allow everyone time to speak

Leaving Lockdown Public Debate

What we learned

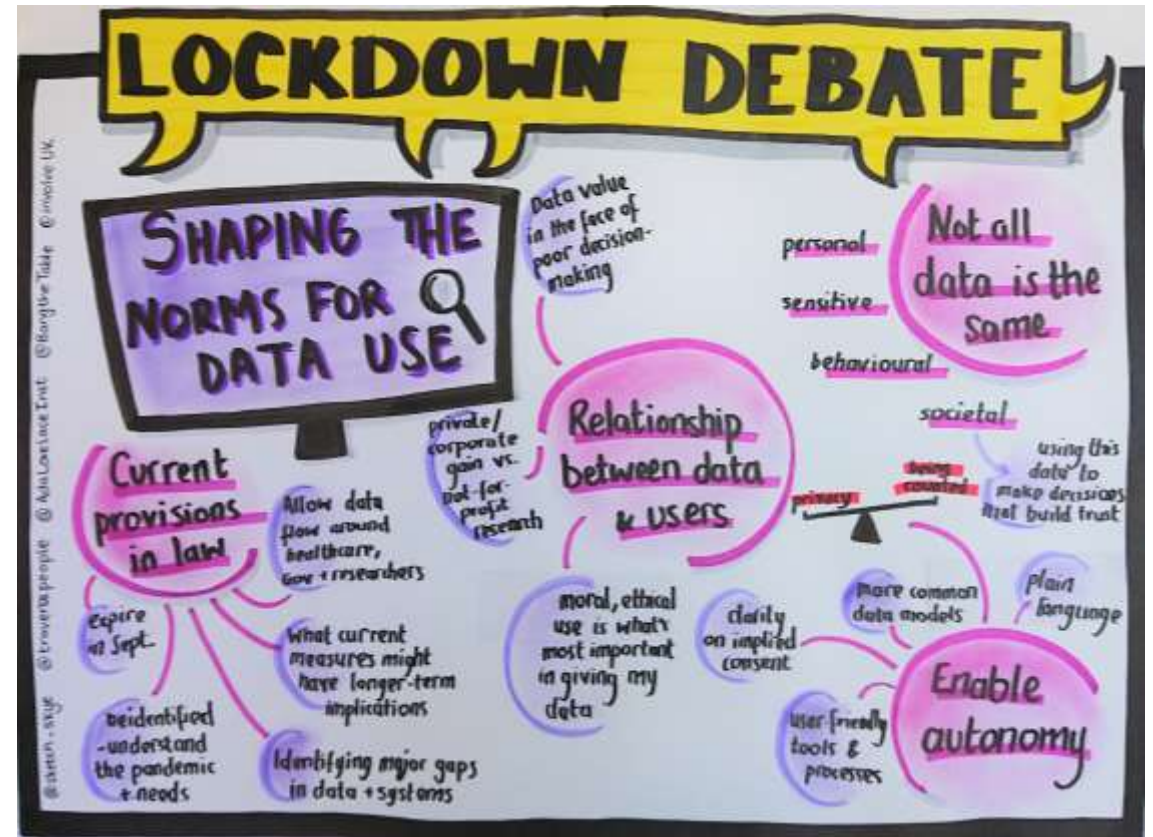
Why we did it

- >Public input into COVID19 tech matters
- >We couldn't explore this through our usual approach
- >We needed to respond in an agile way

- >We thought it was important to listen to the public
- >We wanted to experiment
- >We wanted to collaborate

Our objectives

1. Influence research content
2. Generate timely research data
3. Demonstrate that inclusive, deliberative research can be done online and alongside the development of policy
4. Learn about conducting deliberation online, asynchronously, and under shorter timescales



Rapid online deliberation

Four organisations:
Traverse, Ada
Lovelace,
Bang the
Table, Involve

28 members
of the public
from two
locations,
recruited to a
sample

Five specialists
presenting on
the data
issues around
lockdown
tech

Who was
involved

What we
covered

Week 1: Exit
strategies,
technology
and data

Week 2: Digital
contract
tracing and
the NHS app

Week 3:
Agreeing
priorities for
policy

Thursday: 90
min zoom Q&A
with specialist

In your own
time: 2
activities on
EngagementH
Q

Monday: 60
min zoom
discussion in
groups of 8

What it
looked
like

What we did

Did it work?

Was it inclusive?

Was it deliberative?

Did it work online?

Was it as rapid as policy?

What we learned

A learning experience, concerned with evidence

Went well

- Plenary for information-giving is efficient
- Zoom chat function supports inclusion
- Engagement HQ supports reflection and relationships

Do different

- Circulate materials early
- Use video to share information
- More interaction on Engagement HQ

What we learned

Long-form and reflective

Went well

- Time between sessions supports reflection
- Multiple ways of contributing
- Asynchronous activities support engagement

Do different

- More time for discussions
- Add a chat forum
- Run telephone interviews

What we learned

Hearing a diversity of voices

Went well

- 28 out of 31 participants remained engaged
- Broadly reflective sample
- Process was inclusive – other than technology hiccups

Do different

- More locations
- Sampled by affectedness, not just representativeness
- More support for digital on-boarding

What we learned

Embracing complexity, while exploring consensus

Went well

- Focus on values, ideas, and questions helped underpin discussions
- Use of one example to explore broader policy questions

Do different

- Share emerging findings with participants earlier
- Establish way of working together on Engagement HQ or Google doc

EngagementHQ Tools Spectrum

Managing your project communications



Open environment

Participants can engage with each other. Comments, images and ideas are visible to the community



FORUM

The Forums tool creates a space for discussion, dialogue and debate. People share their experiences with others, ask questions and have conversations in a safe and interactive environment.



IDEAS

Ideas provides "virtual" post it notes for individuals to add their ideas to a collective board. People like the ideas that inspire them most, helping align your priorities with what matters most to the community.



PLACES

Places is a simple way to gather community feedback and ideas directly on a map. Participants drop a "pin" in the area of concern, add photos and then fill in a quick survey.

Mixed environment

Participants can see other participant contributions. However, there is little peer-to-peer interaction. Some data may be visible to the public, other data is just accessible by admin.



STORIES

When we tell or hear a story, neuroscience tells us that we experience things on a higher and more resonant level. Stories helps your community better understand, empathize and relate to others as well as your project goals.



GUESTBOOK

Guestbook keeps things simple; people are only able to upload comments, which are moderated to manage what appears publicly. No other interaction is enabled.



QUESTIONS

Questions is an issues management and communications risk mitigation tool. It is a managed space for your community to ask you questions and for you to respond either publicly or privately.

Controlled environment

Participants cannot engage with each other. Data is stored in the backend and only accessible by admin.



POLLS

Polls encourage people to give a quick answer on one question, selecting from multiple choice answers. They are able to instantly see the Poll results, piquing their interest and giving you real time insight.



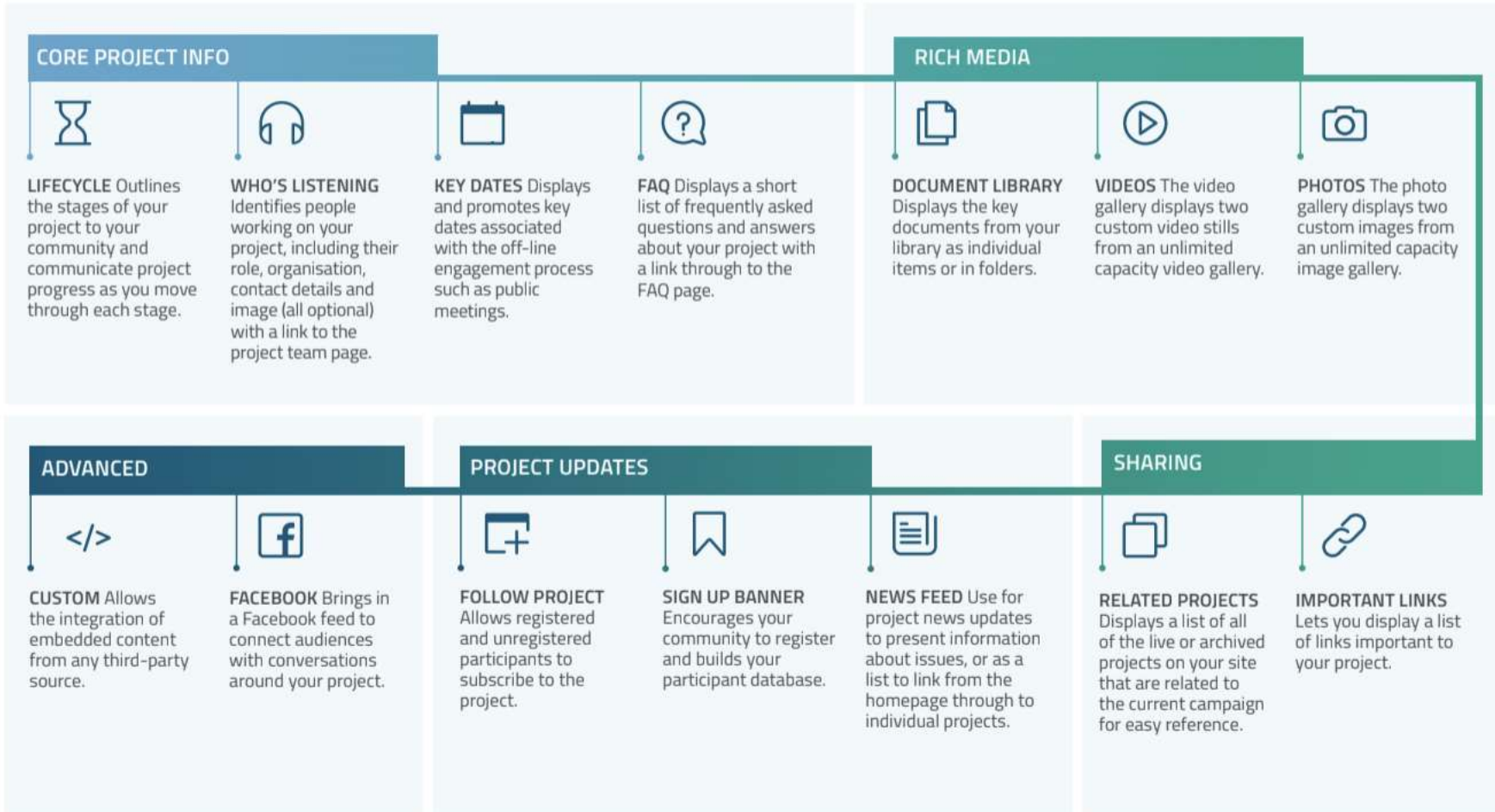
SURVEYS

The Surveys tool gives people an opportunity to voice their opinion in a convenient and guided way, which has historically shown higher response rates than other formats.

Learning Tools

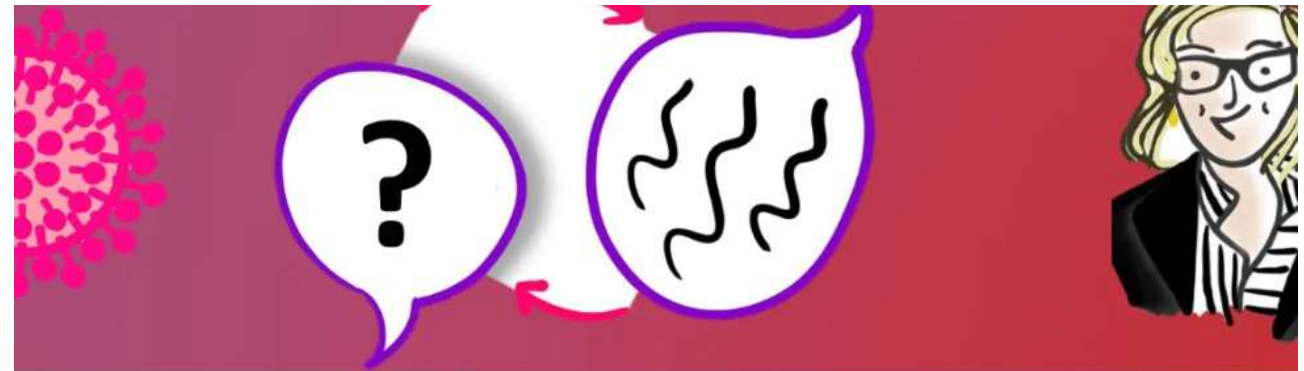


EngagementHQ incorporates a range of information tools to support your online learning and engagement objectives. Highlight your key content and information resources to make it easier for your audience to self-educate and explore the issues in depth.



Engagement HQ

- Private site requiring registration
- Key dates, ways of working, document, FAQs
- Weekly project activities



Welcome to your platform for the Leaving Lockdown Public Debate!

It's not quite like sitting down and having a chat, but it's still a friendly and safe space to share views.

We will post the content and the activities for each week below.

Remember, if you get stuck, just email covid19deliberation@traverse.ltd and one of our team will help you out

Please note - this site is only moderated once a day, so please bear in mind our ways of working when interacting with other people on the platform.

Key Dates

21 May	Full group session 2
26 May	Break-out session 2
28 May	Full group session 3
01 Jun	Break-out session 2
03 Jun	Final full group wrap-up session

Ways of working

Week 1

Online activities

- Ideas board
- Journal activities
- Polls
- Q&A

YOUR IDEAS | YOUR STORIES | Q & A

Week 1 ideas


about 1 month ago


Many people have a lot of questions about how we might move forward from the lockdown. One thing people talk about is wanting to see and spend time with friends and family.

What are YOUR ideas for making it safe to see friends and family outside of your immediate household?

This might involve some of the ideas we discussed in the session, or something completely different. It might be about what you would need to understand or be aware of in order to feel safe.


If you have lots of ideas, use **lots of tabs!** You can also "like" [Continue reading](#)


 To add your idea
[Sign In / Register](#)

 **Anna**
about 1 month ago

Household bubbles - being able to mix with 1 or 2 other households and only those households.


Surely must be the way forward
In order to be able to see family


0 Comment 3 

 **Juno**
about 1 month ago

Better cycling schemes


This could allow more people to travel around London without using public transport. Santander bikes should be open to all at no cost to reduce

0 Comment 1 

 **Robert**
about 1 month ago


Public transport

Staggered work hours to alleviate pressure on public transport

 **Robert**
about 1 month ago

Working at home

Anyone who works behind a computer screen as a career should be made to work from home. The excess offices should

 **Mandy**
about 1 month ago

Safe Meeting Spaces

Gardens and parks are all very well but as we head towards winter we need an alternative. Perhaps 'safe' meeting spaces

Ada Lovelace Institute

bangthetable

involve

TRAVERSE

Participant perspective

Questions?



Break-out group discussion

- How do we frame deliberative processes on a “live” social issue?
- How can such a process feed into a live policy cycle?